



Wood Test Fixtures Tension Grips- Parallel to Grain

Catalog Number 2820-007

Features

- Meets ASTM D 143
- 30 kN (3,000 kgf, 6,750 lbf) force capacity
- Designed for 25 mm (1 in) x 460 mm (18 in) long specimens
- Open fronted design for ease-of-specimen insertion
- Simple shoulder loading design

Description

The tensile strength of wood can be readily determined using these specially designed grips. They provide an accurate and easy-to-use method for assessing tensile strength parallel to the grain on different types of timber. The grips meet international standard ASTM D 143.

Principle of Operation

The grips consist of two steel specimen holders. The upper holder is attached to the load cell of the test system via a flexible coupling to provide optimum alignment. The lower holder mounts directly to the test machine base adaptor. The prepared specimen is simply inserted from the front into the holders which are designed to apply the test load to the specimen through its shoulders.

The force required to break the specimen is applied by moving the crosshead in the tensile direction.



▲
2820-007 tension grips - parallel to grain

Application Range

- Tensile strength of wood according to ASTM D 143

Wood Test Fixtures Tension Grips- Parallel to Grain

Catalog Number 2820-007

Specifications

Catalog Number	2820-005
Maximum Capacity	30 kN (3,000 kgf, 6,750 lbf)
MECHANICAL CONNECTION	
Upper fitting	½ in clevis pin (Type Dm)
Lower fitting	½ in clevis pin (Type Dm)
Overall Width (A)	65 mm (2.5 in)
Effective Length (B)	200 mm (8 in)
Weight	1.5 kg (3.3 lb)
Temperature Range	Room temperature

Notes:

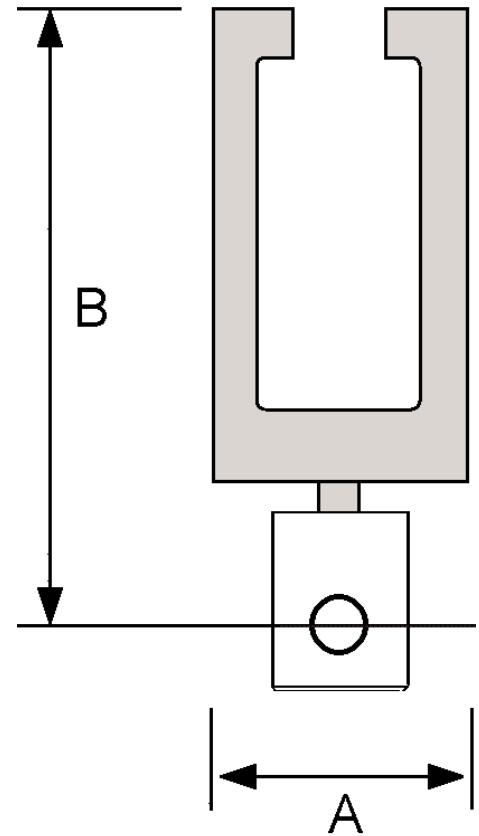
1. Requires flexible coupling.
2. Tensile tests to BS 373 may use 2716 series wedge-action grips

Other Wood Testing Fixtures Available

Catalog Number	Description
2820-002	Shear (parallel to grain)
2820-003	Cleavage (MONNIN)
2820-004	Hardness
2820-005	Nail or screw withdrawal
2820-006	Adhesive bond (tensile)
2820-007	Tensile (parallel to grain)
2820-008	Tensile (perpendicular to grain)
2820-009	Compression (parallel to grain)
2820-010	Compression (perpendicular to grain)
2820-011	Tensile (perpendicular, for chipboard etc)
2820-012	Static bend

Notes:

1. Custom-designed fixtures for testing wood and timber products are also available.
If the above fixtures do not meet your requirements then please contact us.



▲
2820-007 tension grips- parallel to grain



Corporate Headquarters

100 Royall Street, Canton, Massachusetts 02021-1089, USA
Tel: +1 800 564 8378 or +1 781 575 5000 Fax: +1 781 575 5751

Instron Industrial Products

900 Liberty Street, Grove City, PA 16127-9969, USA
Tel: +1 724 458 9610 Fax: +1 724 478 9614

European Headquarters

Coronation Road, High Wycombe, Bucks HP12 3SY, United Kingdom
Tel: +44 1494 464646 Fax: +44 1494 456123

www.instron.com

Instron is a registered trademark of Instron Corporation. Other names, logos, icons, and marks identifying Instron products and services referenced herein are trademarks of Instron Corporation and may not be used without the prior written permission of Instron. Other product and company names listed are trademarks or trade names of their respective companies.

Copyright© Instron 2005. All rights reserved.
All of the specifications shown in this brochure are subject to change without notice.